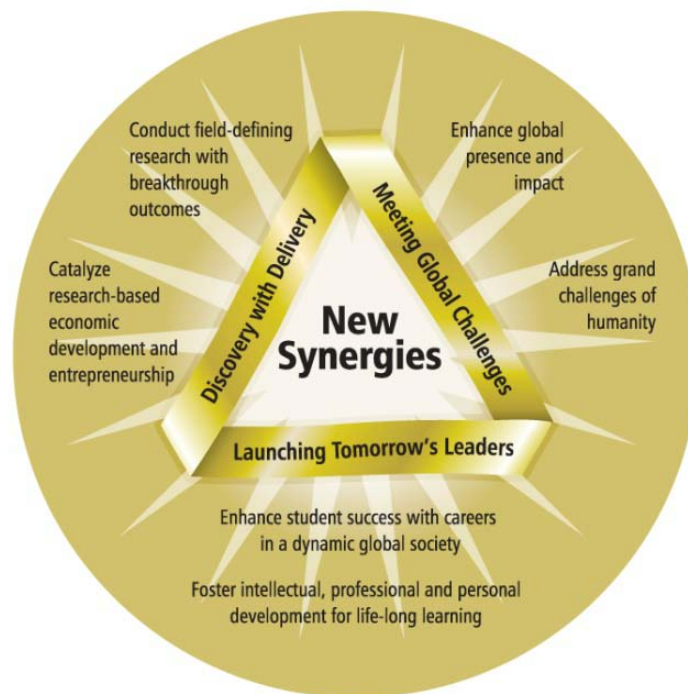


PURDUE

U N I V E R S I T Y



GOVERNANCE REPORT TO THE BOARD OF TRUSTEES

ENROLLMENT AND STUDENT SUCCESS

September 2011

Highlights of Student Success Characteristics

West Lafayette Enrollment and Diversity

- West Lafayette total enrollment is 39,637 (30,776 undergraduates, 924 professional and 7,937 graduate students).
- Undergraduate residency mix: 60 % Resident / 40% Nonresident.
- The percent of undergraduate women is 43%.
- Minority undergraduate population (Hispanic/Latino, Black/African American, Asian, American Indian/Native Alaskan, Native Hawaiian/Pacific Islander, and two or more races) is 4,191, the highest count of minority undergraduates in Purdue's history. Minority professional/graduate population is 1,003, also a record high.
- International undergraduate population of 4,544 also is a record.

Academic Preparation of New Freshmen and Admission

- Overall, the academic profile is the highest ever for Purdue.
- SAT Total average for 2011 is 1731 which is a 14-point increase from 2010. The ACT average improved to 26.6.
- The mean high school GPA rose from 3.57 to 3.62 and High School class rank rose from 82 to 83. There were 29,513 applications submitted for the West Lafayette campus.
- Sixty-eight percent (68%) of freshman applications were admitted compared to 79% five years ago. The yield of admitted students increased to 33%.

Graduation and Retention

- Freshmen to sophomore retention rates increased by 1.2 percentage points over last year (89.0% to 90.2%).
- The four-year graduation rate increased by 2.1 percentage points (40.3% to 42.4%) compared to last year.
- The six-year graduation rate decreased by 1.0 percentage points (69.7% to 68.7%) compared to last year.

Regional Campus and Technology Statewide Enrollment Data – Fall 2011

Campus	Calumet	IPFW	N. Central	Technology Statewide
Headcount	9,786	14,326	5,279	1,231
% Increase	<1%	1%	14%	-9%

Purdue University System Enrollment Data – Fall 2011

(Includes Purdue programs at IUPUI)

Headcount	75,436
FTE	61,874
% Female	47%
% Minority	17%
% Minority U.S. Students	19%
% International	12%

Highlights of Student Success Programs

- Boiler Gold Rush (BGR) had 4,933 new students (freshmen and transfers) participating. This included nearly 71% of the new beginner population. BGR participants consistently have significantly higher retention rates than non-participants – 91% v 87% for fall 2010. This is especially true for participating women and underrepresented minorities.
- This fall, 63 Learning Communities have a total participation of 1,663 students, 25% of the first year class.
- Purdue Promise is the intentional connection of four years of meeting financial need through grant and work-study funds and providing academic and personal support. Participants include Twenty-first Century Scholars with an annual family income of less than \$40,000. This fall's incoming Purdue Promise cohort has 252 students, 45 of whom are Emerging Urban Leaders. The 2010 cohort of 223 students had a first-year retention rate of 92% - above the University average. The second-year retention rate for the 2009 class was 83% - equal to the University average.
- The School of Veterinary Medicine offers Boiler Vet Camp, a one-week long residential veterinary medicine camps for want-to-be veterinarians. The Junior Camp hosts 50 rising 8th and 9th grade students, while the Senior Camp hosts 40 rising 10th, 11th and 12th grade students. The popularity of these camps continues as 334 applications were received from across the United States for the 90 camper spots. The Doctor Veterinary Medicine (DVM) students participated as counselors for both the Jr. and Sr. Boiler Vet Camps.
- Many ROTC students are employed in the outreach team of the Military Family Research Institute (MFRI) in the College of Health and Human Sciences. These students, as future military leaders, are provided the opportunity to work directly with military families and children through various programs such as our summer camp and Passport Toward Success. As these ROTC students work on various projects aimed at helping military service members and their families, their knowledge about the challenges and strengths of military families' increases. This information and exposure to this population prior to their commissioning makes a better prepared leader to serve not only the interest of their command, but those they command as well.
- A student farm was developed by the College of Agriculture. As a result of significant support from several groups this project has progressed quickly. An active student club has formed around the farm activities. Additionally, there is an eight-week internship that assists with the management of the student farm, including planning, infrastructure development (e.g. hoop house construction) and vegetable production as well as the continued development of a long term plan for the student farm. Crops have been planted for the 2011 growing season and five student interns are managing the farm as well as conducting research projects there.
- The College of Liberal Arts Online Writing Lab (OWL) recruits and teaches students to be Undergraduate Teaching Assistants and Business Writing Consultants. Graduate Students are recruited to coordinate Writing Lab Programs. In 2010 the Writing Lab served 2,095 unique, on-campus users. At the state, national and international level, OWL's Internet page received 185 million hits; OWL answered almost 4,000 email questions, and responded to approximately 560 grammar hotline questions with telephone calls. In January 2011, the Bill & Melinda Gates Foundation funded a \$1.5 million grant to create a new interactive writing tool for high school students.
- The College of Engineering faculty members who have served as NSF Graduate Research Fellowship application reviewers in recent years worked together to prepare a workshop for graduate students who are considering applying for the NSF Fellowship. In collaboration with the Graduate School, workshops were held for approximately 150 students, providing them with information on what is expected by application reviewers.

A learning environment immersed in a rich and dynamic culture of diversity, equality, and inclusion for all people.

ENROLLMENT AND DIVERSITY ■ West Lafayette

Fall Semester Enrollment for All Students Demographics

Fall 2011 Total Enrollment = 39,637

30,776
 77.7% Undergraduate

7,937
 20.0% Graduate

924
 2.3% Professional

	Undergraduate						Graduate and Professional					
	2010		2011		1-Year Change		2010		2011		1-Year Change	
	%	#	%	#	%	#	%	#	%	#	%	#
Gender												
Male	58%	17,754	57%	17,668	0%	-86	60%	5,290	59%	5,259	-1%	-31
Female	42%	13,082	43%	13,108	0%	26	40%	3,600	41%	3,602	0%	2
Fee Residency												
Indiana Resident	63%	19,381	60%	18,350	-5%	-1,031	27%	2,396	27%	2,350	-2%	-46
U. S. Non-Resident	26%	8,098	26%	7,970	-2%	-128	36%	3,163	35%	3,130	-1%	-33
International Fee Resident ¹	11%	3,357	14%	4,456	33%	1,099	37%	3,331	38%	3,381	2%	50
Race/Ethnicity/Citizenship												
American Indian or Alaska Native	<1%	106	<1%	77	-27%	-29	<1%	25	<1%	25	0%	0
Asian	5%	1,682	5%	1,575	-6%	-107	4%	389	4%	376	-3%	-13
Black or African American	3%	1,079	4%	1,083	<1%	4	3%	300	3%	288	-4%	-12
Hispanic or Latino	3%	960	3%	1,052	10%	92	3%	224	3%	242	8%	18
Native Hawaiian or Pacific Islander	<1%	14	<1%	15	7%	1	<1%	2	<1%	5	N/A	N/A
Two or more races	1%	217	1%	389	79%	172	<1%	37	1%	67	N/A	N/A
International ²	11%	3,420	15%	4,544	33%	1,124	38%	3,341	38%	3,390	1%	49
Totals												
Total Students		30,836		30,776	<1%	-60		8,890		8,861	<1%	-29
Total Ethnic Minorities		4,058		4,191	3%	133		977		1,003	3%	26
U.S. Students		27,416		26,232	-4%	-1,184		5,549		5,471	-1%	-78
Percent U.S. Minority		14.8%		16.0%	8%	0		17.6%		18.3%	1.6	N/A
Underrepresented Minority (URM)³		2,284		2,455	7%	171		573		593	3%	20

¹Based on fee residency

²Based on citizenship

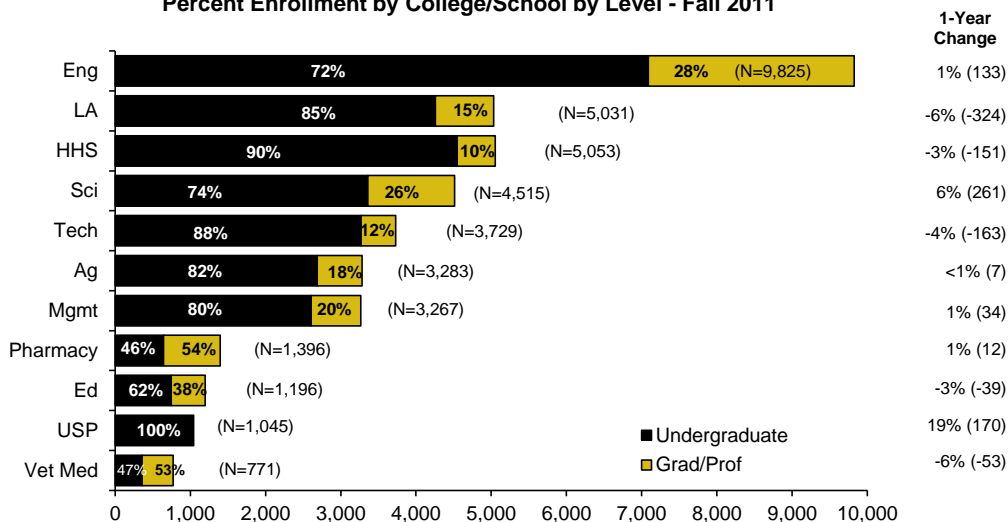
³Includes students with any indication of American Indian, Black, Hispanic or Native Hawaiian. New Federal race/ethnicity categories effective 2010.

- Total enrollment is 89 fewer than last year with slight decreases in both undergraduate (-60) and graduate/professional students (-29). Enrollment goals were met.
- The number of international students continues to rise, 33% higher among undergraduates 1.5% among graduate/professional students. Purdue is one of the leading U.S. public institutions enrolling students from all over the world.
- Among U.S. citizens and Permanent Residents, the number of ethnic minorities increased by 159 and the number of underrepresented minorities by 191. Women comprise 42% of total enrollment, unchanged from last year.

Fall Semester Enrollment for All Students by College/School

- Engineering is the largest college on the West Lafayette campus with an enrollment of 9,825.
- There are a total of 924 professional students, 635 in Pharmacy and 289 in Veterinary Medicine.
- 173 undergraduates are nondegree. At the graduate level, 353 students are in interdisciplinary and special programs.

Percent Enrollment by College/School by Level - Fall 2011

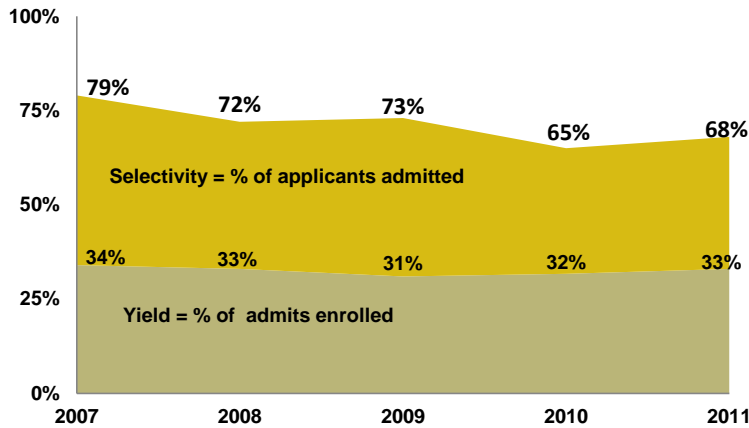


Note: Excludes nondegree and unassigned students.

Effective programs that expand and instill the awareness, necessity, and value of global citizenship widely among all learners.

NEW STUDENT ENROLLMENT ■ West Lafayette

Admissions Freshmen Beginners



- 29,513 applications were received for the 2011 freshman class.
- Yield of admitted students rose slightly from 2010 to 33%.

- **Indiana Applicants** - Over 9,200 Indiana residents applied; among those who completed their applications, all but 358 were offered admission to the Purdue system. Among the 6,073 who were offered admission to the West Lafayette campus, 57.3% enrolled, an increase of nearly 3 percentage points.

New Beginner Freshmen and Transfers

Fall Semester Enrollment of New Freshmen

	2007		2008		2009		2010		2011		1-Year Change (Fall 2010-2011)	
	%	#	%	#	%	#	%	#	%	#	% Change	#
Gender												
Male	57%	3,893	56%	3,925	57%	3,522	57%	3,636	57%	3,764	4%	128
Female	43%	2,995	44%	3,138	43%	2,649	43%	2,711	43%	2,895	7%	184
Fee Residency												
Indiana Resident	66%	4,535	62%	4,361	62%	3,808	59%	3,733	52%	3,480	-7%	-253
U.S. Non-Resident	28%	1,943	31%	2,181	27%	1,673	29%	1,819	28%	1,854	2%	35
International Fee Resident ¹	6%	410	7%	521	11%	690	13%	795	20%	1,325	67%	530
Race/Ethnicity												
American Indian or Alaska Native	1%	36	1%	45	<1%	18	<1%	6	<1%	4	-33%	-2
Asian	6%	410	6%	401	5%	284	6%	389	5%	323	-17%	-66
Black or African American	4%	280	3%	238	4%	219	3%	207	3%	226	9%	19
Hispanic or Latino	3%	214	3%	194	3%	168	3%	222	4%	269	21%	47
Native Hawaiian or Pacific Islander	N/A	N/A	N/A	N/A	N/A	N/A	<1%	7	0%	0	-100%	-7
Two or more races	N/A	N/A	N/A	N/A	N/A	N/A	2%	121	2%	157	30%	36
International ²	6%	410	7%	518	11%	689	13%	795	20%	1,329	67%	534
Total												
Freshmen		6,888		7,063		6,171		6,347		6,659	5%	312
Total Ethnic Minorities		940		878		689		952		979	3%	27
U.S. Students		6,478		6,545		5,482		5,552		5,330	-4%	-222
Percent U.S. Minority		14.5%		13.4%		12.6%		17.1%		18.4%	4.5	N/A
Underrepresented Minority (URM)³		530		477		405		506		590	17%	84

¹Based on fee residency

²Based on citizenship

³Includes students with any indication of American Indian, Black, Hispanic or Native Hawaiian. New Federal race/ethnicity categories effective 2010.

• In the land-grant tradition, Purdue consistently enrolls a large number of freshmen who are the first in their family to attend college.

• Low-income, Pell Grant eligible students represent almost one-quarter of the U.S. freshmen.

	2008		2009		2010		2011		1-Year Change (Fall 2010-2011)	
	%	#	%	#	%	#	%	#	% Change	#
First Generation	24%	1,719	25%	1,540	23%	1,446	23%	1,503	4%	57
Pell Eligible (U.S. students)	15%	992	22%	1,198	24%	1,311	24%	1,270	-3%	-41

Fall Semester Enrollment of New Transfer Students

• Transfer applications from outside the Purdue system remained steady as did transfers from our regional campuses.

• The number of new transfer students declined slightly.

	2007		2008		2009		2010		2011		1-Year Change (Fall 2010-2011)	
	%	#	%	#	%	#	%	#	%	#	% Change	#
New Transfers	83%	979	79%	990	83%	1,034	78%	871	79%	868	<1%	-3
New Purdue Regional Campus Transfers	17%	205	21%	270	17%	219	22%	248	21%	229	-8%	-19
Total		1,184		1,260		1,253		1,119		1,097		

Strategic Plan Highlight
Launching Tomorrow's Leaders

A superior student body, well-prepared and motivated to undertake educational challenges.

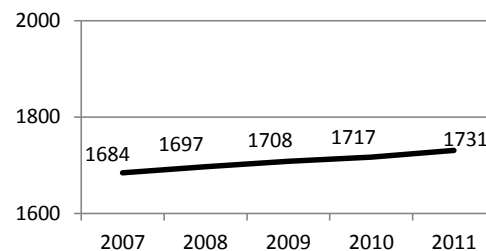
INCOMING STUDENT QUALITY ■ West Lafayette

Academic Preparation of New Freshmen

ACT and SAT Test Scores

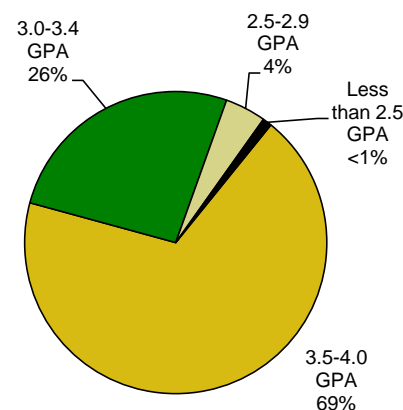
	2007	2008	2009	2010	2011
ACT Average ACT Composite	25.5	25.8	26.1	26.3	26.6
25th/75th Percentile Score	23/28	23/29	23/29	23/29	24/30
SAT SAT Composite Average	1684	1697	1708	1717	1731
25th/75th Percentile Score	1500/1860	1520/1870	1530/1880	1530/1900	1540/1910
Average Critical Reading Score	551	554	555	556	556
25th/75th Percentile Score	490/610	490/610	500/610	500/610	490/610
Average Math Score	594	598	606	610	619
25th/75th Percentile Score	530/660	540/660	540/670	540/680	550/690
Average Writing Score	539	545	547	551	556
25th/75th Percentile Score	480/590	490/600	490/600	490/610	500/610

SAT Total Average



- Every measure of the academic quality profile of the freshman class set Purdue records.
- 19.9% of the students submitted only the ACT, 46.2% only submitted the SAT and 26.5% submitted scores for both.

Percentage of New Freshmen in Each High School GPA Bracket 2011



Average GPA and High School Rank

	2007	2008	2009	2010	2011
High School Average GPA					
Average GPA	3.47	3.51	3.55	3.57	3.62
High School Rank					
Percent in Top 10 percentile	31%	30%	35%	37%	39%
Percent Submitting Class Rank	72%	67%	62%	58%	52%

- The average high school GPA of entering freshmen increased by .05.
- Sixty-nine percent of our freshmen had a GPA of 3.5 or higher, an increase of 4 percentage points.
- Among those whose schools submitted a class rank, 39% (compared to 37% last year) were in the top 10% of their class. The number of schools reporting rank continues to decline; only 52% of the class had a reported rank.

Advanced Placement Scores

- The rigor of the high school curriculum is an excellent predictor of success in college. The Advanced Placement curriculum is the most widespread rigorous curriculum with national benchmarks.
- The number and percentage of Purdue freshmen with at least one AP exam score of 3 or higher has increased to 38% of the class.
- This compares to 16.9% of high school graduates nation-wide and 12.4% of Indiana high school graduates scoring a 3 or higher on at least one exam in 2010.

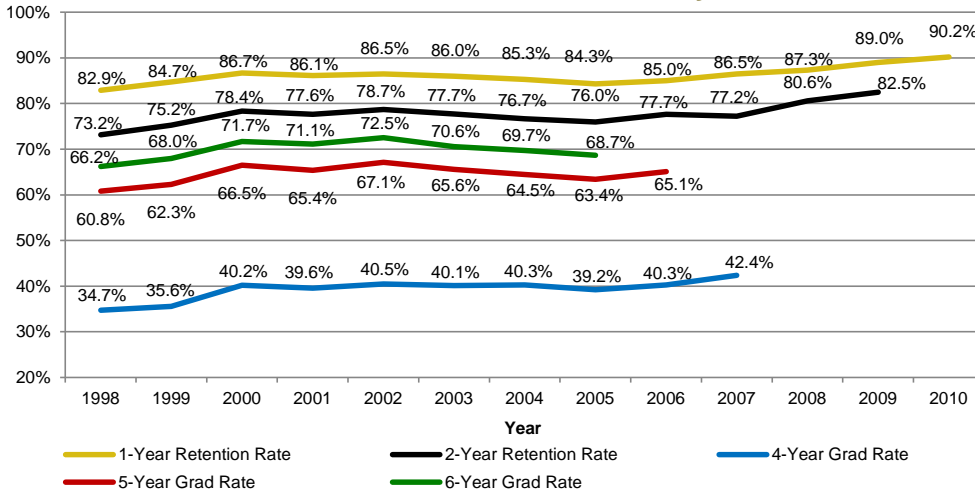
	2009		2010		2011	
	%	#	%	#	%	#
New Beginners Cohort		6,171		6,347		6,659
New Beginners with a least one AP Test Score of 3 or higher	33%	2,064	37%	2,357	38%	2,530

Strategic Plan Highlight Launching Tomorrow's Leaders

Strong support services to increase success, retention, and graduation for students from all backgrounds.

GRADUATION AND RETENTION ■ West Lafayette

Retention and Graduation Rates First-Time, Full-Time by Cohort



- Purdue's one-year retention rate steadily increased the last several years and now has climbed to over 90% - the highest in Purdue's history. Two-year retention was also a record at 82.5%.
- For the 2010 entering cohort, non-resident students were retained at slightly higher rates than Indiana residents.
- The historical gaps among the retention of most ethnic groups continue to close.
- The four-year graduation rate of 42.4% is a Purdue record and on trajectory toward a goal of a 50% four-year rate. As expected, the six-year graduation rates declined slightly; one-year retention had dipped for the cohort that entered in 2005. As the better-retained cohorts move through Purdue the six-year graduation rate will improve.
- The three-year average of the six-year graduation rate of 70% for Purdue remains behind the Peer and Big Ten means.

Retention and Graduation Rates by Group

	1-Year Retention by Entry Year			2005 Cohort Graduation Rate			3 Yr Avg ¹ Grad Rate
	2008	2009	2010	4-Yr	5-Yr	6-Yr	6-Yr
Gender							
Male	87.1%	88.6%	89.7%	32.9%	60.1%	65.7%	67.2%
Female	87.6%	89.5%	90.9%	48.6%	68.2%	73.2%	73.2%
Race/Ethnicity/Citizenship							
American Indian or Alaska Native	77.3%	83.3%	66.7%	27.8%	55.6%	61.1%	59.7%
Asian	89.1%	85.7%	92.5%	29.4%	50.0%	60.7%	65.6%
Black or African American	82.4%	87.3%	87.4%	20.0%	40.0%	46.7%	55.1%
Hispanic or Latino	82.2%	87.1%	88.8%	28.6%	55.6%	62.2%	61.1%
Native Hawaiian or Pacific Islander	NA	NA	100.0%	NA	NA	NA	NA
Two or more races	NA	NA	91.7%	NA	NA	NA	NA
White	87.8%	89.2%	90.2%	41.1%	66.0%	70.8%	71.0%
International ²	86.3%	90.1%	90.2%	40.6%	57.9%	64.0%	69.9%
Fee Residency							
In. Resident	87.8%	88.8%	89.9%	40.2%	64.5%	69.8%	70.0%
U.S. Non-Resident	86.7%	89.0%	91.0%	36.8%	61.8%	67.2%	69.0%
International Fee Resident ³	86.2%	90.1%	90.1%	40.6%	57.9%	64.0%	69.9%
Overall	87.3%	89.0%	90.2%	39.2%	63.4%	68.7%	69.7%

¹The three-year average includes data from the 2003, 2004, and 2005 cohorts.

²Based on citizenship

³Based on fee residency

New Federal race/ethnicity categories effective 2010.

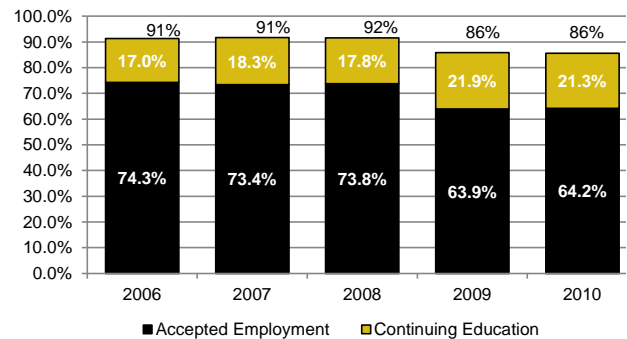
Average Four and Six-Year Graduation Rates at Peer and Big Ten Public Institutions, Full-time Freshmen

Institution	Four-Year Graduation Rates			Six-Year Graduation Rates		
	Cohort Year		One-Year Change	Cohort Year		One-Year Change
	2005	2006		2003	2004	
Cal Berkeley	71.0%	71.0%	0.0%	90.2%	91.1%	0.9%
Michigan	72.8%	75.9%	3.1%	89.4%	89.7%	0.3%
Penn State	63.1%	65.3%	2.2%	84.6%	85.3%	0.8%
Illinois	65.9%	68.6%	2.7%	82.5%	84.3%	1.9%
Wisconsin	53.0%	53.1%	0.1%	82.2%	83.9%	1.7%
Texas - Austin	52.6%	50.6%	-2.0%	80.6%	80.1%	-0.4%
Georgia Tech	31.3%	33.6%	2.3%	79.1%	79.7%	0.5%
Texas A&M	49.8%	48.7%	-1.1%	79.7%	79.5%	-0.2%
Michigan State	49.9%	53.5%	3.6%	79.0%	78.8%	-0.2%
Ohio State	51.0%	52.6%	1.5%	74.9%	78.0%	3.2%
Indiana	50.2%	55.3%	5.2%	73.9%	71.4%	-2.5%
Minnesota	47.2%	50.1%	2.9%	68.4%	70.1%	1.7%
Iowa	46.5%	46.5%	0.0%	68.9%	69.6%	0.7%
Purdue	38.8%	39.7%	0.9%	70.0%	68.6%	-1.4%
Peer Mean (excluding Purdue)	57.4%	58.3%	0.9%	83.5%	84.2%	0.7%
Big Ten Mean (excluding Purdue)	55.5%	57.9%	2.4%	78.2%	79.0%	0.8%

Source: AAUDE Retention Graduation survey, 2009-10.

Undergraduate Placement

Baccalaureate and Professional Degree Recipients who Reported Accepting Employment or Continuing Education



Source: Center for Career Opportunities Post Graduation Survey.

Board of Trustees Governance Report ■ September 2011

Strategic Plan Highlight Launching Tomorrow's Leaders

Transformational learning opportunities that actively engage students to discover, expand, and apply knowledge within their disciplines, across disciplines, and with respect to global issues.

DEGREES CONFERRED BY LEVEL ■ West Lafayette

Degrees by Level

Degree Level	2006-07	2007-08	2008-09	2009-10	2010-11
Associate	458	458	404	229	205
Baccalaureate	5,839	5,940	5,943	6,265	6,494
Educational Specialist	1	1	1	3	4
Professional	224	240	224	213	248
Master's	1,377	1,326	1,321	1,348	1,484
Doctorate	613	600	657	639	672
Total	8,512	8,565	8,550	8,697	9,107

Baccalaureate Degree Production

Baccalaureate	5,839	5,940	5,943	6,265	6,494
Annual FTE	31,202	31,146	31,052	30,760	30,568
Percent Degree Production	18.7%	19.1%	19.1%	20.4%	21.2%

- There are bold goals in both Indiana and the nation to increase the number of college-educated adults. The West Lafayette campus contributed to this effort by conferring 4.7% more degrees this year.

- Four-, five-, and six-year graduation rates only take into consideration students who begin in the fall as full-time freshman beginners.

- To take into account transfer students and those who begin in the spring and summer, an illustrative measure of degree production is the number of annual Bachelor's degrees conferred relative to annualized enrollment.

Top Four-Year Institutions West Lafayette Students Graduated from within Six Years with Baccalaureate Degree Entering Class, First-Time, Full-time

Institution	2003	2004
Indiana University Purdue University Indianapolis	69	74
Indiana - Bloomington	30	48
Purdue Calumet	21	25
University of Illinois - Champaign-Urbana	6	18
Ball State	19	16
University of Southern Indiana	8	15
Indiana Purdue-Fort Wayne	10	14
The Ohio State University	8	12
Northern Illinois University	13	11
Purdue North Central	15	11
Indiana State University	10	9
Indiana - South Bend	15	8
University of Louisville	10	5
University of Illinois - Chicago	14	1
All Other Institutions	263	284
Total	511	551
Percent of Entering Class	8.1%	8.6%

- As a member of the National Student Clearinghouse, Purdue has access to information regarding the attainment of degrees elsewhere by students who began at one of our campuses.
- Approximately 70% of the 2003 and 2004 entering freshman class graduated from the West Lafayette campus. But another 8.1% from the 2003 cohort and 8.6% from the 2004 cohort graduated from U.S. institutions that participate in the Clearinghouse.
- IUPUI graduated the largest number of these students for both years. Several other Indiana institutions and those in nearby states graduate former WL students most frequently. The remaining degrees, however, were earned from a highly differentiated set of institutions across the country.

Board of Trustees Governance Report ■ September 2011

REGIONAL CAMPUSES

■ Calumet ■ IPFW

Calumet Enrollment, Retention and Graduation Rates

Fall 2011
Total Enrollment = 9,786

8,639 88.3%	Undergraduate	1,147 11.7%	Graduate
----------------	---------------	----------------	----------

Fall Semester Enrollment for All Calumet Students

	2007		2008		2009		2010		2011		Change (Fall 2010-2011)	
	%	#	%	#	%	#	%	#	%	#	%	#
Female	57%	5,502	57%	5,274	55%	5,611	56%	5,463	56%	5,454	<1%	-9
Nonresident	14%	1,325	16%	1,450	16%	1,622	17%	1,679	19%	1,895	13%	216
Minority	32%	3,093	33%	3,044	33%	3,349	36%	3,491	33%	3,275	-6%	-216
Percent U.S. Minority	34%	N/A	34%	N/A	35%	N/A	38%	N/A	36%	N/A	8%	N/A
Underrepresented Minority ¹	31%	2,970	31%	2,910	31%	3,183	34%	3,309	32%	3,086	-7%	-223
International ²	4%	387	5%	459	5%	557	6%	613	7%	646	5%	33
Total Students		9,607		9,325		10,133		9,807		9,786	<1%	-21

¹Includes students with any indication of American Indian, Black, Hispanic or Native Hawaiian.

²International count is based on citizenship.

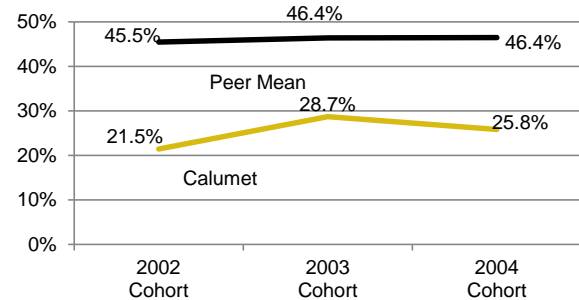
One-Year Retention

	2009 (2008 cohort)	2010 (2009 cohort)	2011 (2010 cohort)
Calumet	68.6%	69.2%	68.5%
Peer Mean	73.7%	75.0%	NA

- Enrollment decreased slightly to 9,786. Minorities represents 33% of enrollment.
- International enrollment has increased by 5%.

New Federal race/ethnicity categories effective 2010.

Six-Year Graduation Rates



IPFW Enrollment, Retention and Graduation Rates

Fall 2011
Total Enrollment = 14,326

13,608 95.0%	Undergraduate	718 5.0%	Graduate
-----------------	---------------	-------------	----------

Fall Semester Enrollment for All IPFW Students

	2007		2008		2009		2010		2011		Change (Fall 2010-2011)	
	%	#	%	#	%	#	%	#	%	#	%	#
Female	57%	6,800	56%	6,924	55%	7,580	55%	7,845	55%	7,936	1%	91
Nonresident	4%	528	4%	525	4%	569	4%	619	4%	626	1%	7
Minority	10%	1,244	11%	1,401	13%	1,715	15%	2,138	16%	2,273	6%	135
Percent U.S. Minority	11%	N/A	11%	N/A	13%	N/A	15%	N/A	16%	N/A	2%	N/A
Underrepresented Minority ¹	8%	986	9%	1,141	10%	1,417	12%	1,728	13%	1,799	4%	71
International ²	1%	162	1%	145	1%	165	1%	197	2%	220	12%	23
Total Students		11,943		12,338		13,675		14,192		14,326	1%	134

¹Includes students with any indication of American Indian, Black, Hispanic or Native Hawaiian.

²International count is based on citizenship.

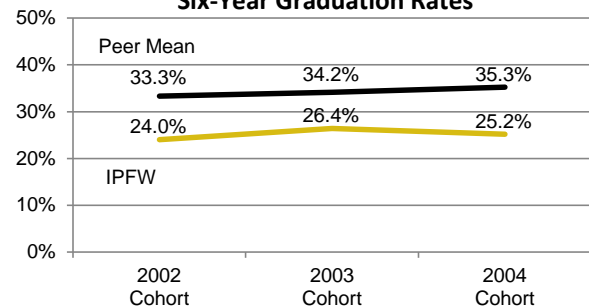
One-Year Retention

	2009 (2008 cohort)	2010 (2009 cohort)	2011 (2010 cohort)
IPFW	62.5%	61.4%	59.6%
Peer Mean	69.4%	70.3%	NA

- Enrollment increased slightly to 14,326. Minority enrollment increased 6% to 2,273 students.
- International student enrollment increased 12% to 220 students.

New Federal race/ethnicity categories effective 2010.

Six-Year Graduation Rates



Board of Trustees Governance Report ■ September 2011

REGIONAL CAMPUSES

■ North Central ■ Technology Statewide

North Central Enrollment, Retention and Graduation Rates

Fall 2011
Total Enrollment = 5,279

5,201
98.5% Undergraduate

78
1.5% Graduate

Fall Semester Enrollment for All North Central Students

	2007		2008		2009		2010		2011		Change (Fall 2010-2011)	
	%	#	%	#	%	#	%	#	%	#	%	#
Female	58%	2,278	58%	2,458	57%	2,544	56%	2,598	59%	3,132	21%	534
Nonresident	1%	54	1%	57	2%	68	2%	71	2%	92	30%	21
Minority	12%	450	13%	544	13%	598	14%	646	18%	926	43%	280
Percent U.S. Minority	12%	N/A	13%	N/A	13%	N/A	14%	N/A	18%	N/A	1	N/A
Underrepresented Minority ¹	11%	416	12%	500	12%	551	13%	599	16%	858	43%	259
International ²	<1%	8	<1%	8	<1%	11	<1%	8	<1%	8	0%	0
Total Students		3,904		4,245		4,463		4,614		5,279	14%	665

¹Includes students with any indication of American Indian, Black, Hispanic or Native Hawaiian.

²International count is based on citizenship.

One-Year Retention

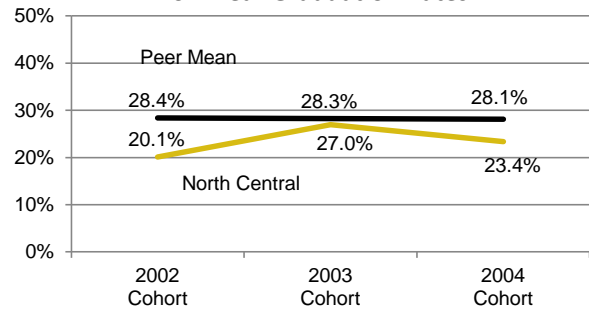
	2009 (2008 cohort)	2010 (2009 cohort)	2011 (2010 cohort)
North Central	54.0%	58.2%	50.6%
Peer Mean	64.4%	63.3%	NA

- Enrollment at the North Central campus at 5,279 is an all-time high; an increase of 14% from last year.

- Minority enrollment also increased 43% to 926.

New Federal race/ethnicity categories effective 2010.

Six-Year Graduation Rates



Technology Statewide Enrollment, Retention and Graduation Rates

Fall 2011
Total Enrollment = 1,231

1,231
100% Undergraduate

Fall Semester Enrollment for All Technology Statewide Students

	2007		2008		2009		2010		2011		Change (Fall 2010-2011)	
	%	#	%	#	%	#	%	#	%	#	%	#
Female	22%	304	21%	283	21%	290	20%	275	20%	243	-12%	-32
Nonresident	7%	96	7%	99	7%	99	8%	102	7%	85	-17%	-17
Minority	8%	106	8%	112	8%	107	7%	98	8%	97	-1%	-1
Percent U.S. Minority	8%	N/A	8%	N/A	8%	N/A	7%	N/A	8%	N/A	1%	N/A
Underrepresented Minority ¹	6%	89	7%	94	7%	91	6%	85	7%	85	0%	0
International ²	1%	7	1%	12	1%	7	0%	4	0%	4	0%	0
Total Students		1,383		1,361		1,387		1,355		1,231	-9%	-124

¹Includes students with any indication of American Indian, Black, Hispanic or Native Hawaiian.

²International count is based on citizenship.

One-Year Retention

	2009 (2008 cohort)	2010 (2009 cohort)	2011 (2010 cohort)
Technology Statewide	61.5%	66.2%	58.0%

Six-Year Graduation Rates

	2003 Cohort	2004 Cohort	2005 Cohort
Technology Statewide	33.1%	28.2%	32.0%

- The degree programs follow the same curriculum requirements as the programs on the West Lafayette campus; the programs at each location are regionally determined by current and projected workforce needs within the region.

- The one-year retention rate for the 2010 cohort was 58.0. The six-year graduation rate for the 2005 cohort increased to 32.0%.

Promote excellence in learning experiences and outcomes, fostering intellectual, professional, and personal development to prepare learners for life and careers in a dynamic, global society.

DEGREES CONFERRED BY LEVEL ■ Regional Campuses

Degrees by Level

Calumet	2006-07	2007-08	2008-09	2009-10	2010-11
Associate	257	251	160	125	159
Baccalaureate	793	854	856	890	977
Total Undergraduate	1,050	1,105	1,016	1,015	1,136
Master's	224	273	284	264	330
Total Degrees	1,274	1,378	1,300	1,279	1,466
Annual Undergraduate FTE	6,165	6,347	6,347	6,710	6,561
Percent Bacc Degree Production	12.9%	13.5%	13.5%	13.3%	14.9%

Indiana-Purdue Fort Wayne

Associate	478	453	466	452	377
Baccalaureate	969	994	1,009	1,157	1,144
Total Undergraduate	1,447	1,447	1,475	1,609	1,521
Master's	199	192	207	225	243
Total Degrees	1,646	1,639	1,682	1,834	1,764
Annual Undergraduate FTE	8,147	8,346	8,490	9,272	9,492
Percent Bacc Degree Production	11.9%	11.9%	11.9%	12.5%	12.1%

North Central

Associate	238	183	190	228	196
Baccalaureate	325	319	322	318	382
Total Undergraduate	563	502	512	546	578
Master's	12	20	37	33	31
Total Degrees	575	522	549	579	609
Annual Undergraduate FTE	2,566	2,645	2,808	2,995	3,112
Percent Bacc Degree Production	12.7%	12.1%	11.5%	10.6%	12.3%

Technology Statewide

Associate	130	117	83	136	146
Baccalaureate	88	94	60	107	151
Total Undergraduate	218	211	143	243	297
Total Degrees	218	211	143	243	297
Annual Undergraduate FTE	727	739	811	933	958
Percent Bacc Degree Production	12.1%	12.7%	7.4%	11.5%	15.8%

- As a member of the National Student Clearinghouse, Purdue has access to information regarding the attainment of degrees elsewhere by students who began at one of our campuses.

- 25.8% of the 2004 entering freshman class graduated from Calumet within six years. Another 65 students or 6.9% graduated from U.S. institutions that participate in the Clearinghouse.

- 25.2% of the 2004 entering freshman class graduated from IPFW within six years.

- 23.4.0% of the 2004 entering freshman class graduated from North Central within six years. Another 54 or 10.5% graduated from U.S. institutions that participate in the Clearinghouse.

- Overall, the number of degrees granted at the regional campuses increased, as did the percent baccalaureate degree production.

- To take into account transfer students, those who begin in spring and those who carry less than a full-time credit hour load, degree production is the number of annual baccalaureate degrees conferred relative to annualized undergraduate degree-seeking enrollment.

ENROLLMENT AND DIVERSITY ■ System-wide

Fall Semester Enrollment for All Students System-wide

Fall 2011
Total Enrollment = 75,436

West Lafayette	Calumet	IPFW	North Central	PU Students at IUPUI	TSW
39,637 52.5%	9,786 13.0%	14,326 19.0%	5,279 7.0%	5,177 6.9%	1,231 1.6%

	2007		2008		2009		2010		2011		1-Year Change (Fall 2010-2011)	
	%	#	%	#	%	#	%	#	%	#	%	#
Demography and Residency												
Female	47%	33,047	47%	33,650	47%	34,644	46%	34,749	47%	35,404	<1%	655
Nonresident	26%	18,570	29%	20,533	27%	20,262	28%	21,133	30%	22,307	6%	1,174
Minority	15%	10,231	15%	10,562	15%	11,234	16%	12,149	17%	12,748	5%	599
Percent U.S. Minority	16%	N/A	16%	N/A	17%	N/A	18%	N/A	19%	N/A	2	N/A
Underrepresented Minority ¹	11%	7,572	11%	7,893	11%	8,441	12%	9,230	13%	9,557	4%	327
International	8%	5,901	9%	6,541	10%	7,205	11%	8,067	12%	9,265	15%	1,198
Totals												
FTE	60,016		61,280		64,094		63,436		61,874		-2%	
Undergraduate	85%	60,031	85%	61,316	85%	63,151	85%	63,230	72%	54,115	-14%	-9,115
Graduate and Professional	15%	10,367	15%	10,672	15%	11,168	15%	11,529	10%	7,759	-33%	-3,770
Total Students	70,398		71,988		74,319		74,759		75,436		1%	

- Purdue's total enrollment, which includes the West Lafayette campus, Purdue Calumet, Indiana University-Purdue University Fort Wayne, students in Purdue programs at Indiana University-Purdue University Indianapolis, Purdue North Central and the Technology Statewide (TSW) sites increased to 75,436 students.

- 70% of all students are Indiana residents. 76% of undergraduates are residents.

- Minority enrollment grew by 5%.

¹Includes students with any indication of American Indian, Black, Hispanic or Native Hawaiian.

New Federal race/ethnicity categories effective 2010.