

Steering Committee 2004-2005

Directors

Bob Walkup, Chair

HLS/CIVL 49-62848
rcwalkup@purdue.edu

Meredith Graham, Vice-Chair/Historian

SCI/MATH 49-41771
mgraham@purdue.edu

Truda Strange, Secretary

FrE/ENAD 49-49713
strange@purdue.edu

Marty Lah, Treasurer

MGMT/KRAN 49-44343
mlah@mgmt.purdue.edu

Committee Chairs

Professional Development

Linda Campion

TECH/KNOY 49-46484
campionl@purdue.edu

Campus Affairs

Marsha Freeland

TECH/KNOY 49-41371
mjfreeland@tech.purdue.edu

Membership Co-Chairs:

Sangita Handa

SCI/PHYS 49-45383
shanda@physics.purdue.edu

Sally Harmon

CSR/MTHW 49-48306
sharmon@purdue.edu

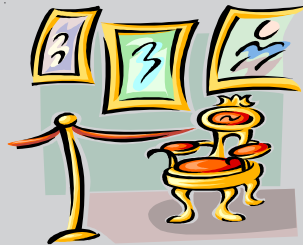
Communications Co-Chairs:

Criselda Marquez

SCI/MATH 49-41771
cmarquez@purdue.edu

Jamie Schoenbeck

VT/VM 49-49235
schoenbj@purdue.edu



Comments From The Chair by Bob Walkup

Congratulations! If you are new to our profession, welcome aboard! If you are returning to a position that you have held for many years, welcome back! If you are among the newly retired, welcome to the start of a new life. If you have accepted a new position, welcome to the challenges that lie ahead. All of these situations share a common theme. The greatest constant in our lives is change. New students, new colleagues, new positions in life, and new challenges to tackle. Who better than you to tackle the new challenges? Who can direct the life of a new student to Purdue University better than you? Who can train a new colleague in the intricacies of the advising profession better than you? Who can discover better methodologies to serve our university than you? Who can be the authoritative source for information about academic advising at Purdue better than you? Who can anticipate and respond to the changes in higher education better than you? Who can help PACADA foster a continually evolving membership better than you?

As professionals deeply committed to our work, we know the answers to all of these questions. We, the PACADA membership, provide the answers to all of these questions.

As we begin a new school year please reaffirm your commitment to our profession. Take some time to make our profession just a little bit better than it was before you became a member. Serve on a committee. Share your thoughts freely. Mentor a new advisor. Educate yourself about new methodologies in the advising profession. Take some time to compliment someone whom you think is doing a particularly good job. It is essential that we treat one another with respect and share our many gifts.

Continued on page 2

PACADA

Purdue Academic Advising Association

I have a strong commitment to those who have given so much to our organization. To reaffirm that commitment, I have asked each member of the Steering Committee to review the “Vision Retreat Recommendations” established in 2002. Those recommendations came as a result of our members’ initiative to establish an Advising Perspective with regard to Purdue’s Strategic Plan. Three primary visions were outlined with goals delineated and strategies developed to measure our success. We will complete the review this year and assess what we need to do to improve. Each of you who serve on a PACADA Committee is asked to review those goals assigned to your committee and to assess our progress. In doing so, we will become stronger and more focused on those processes that affect the lives of our students.

Are we ready for another year? Who better than us to lead the way into the new school year?

Membership Committee Report

By Sangita Handa, Co-Chair

In recognition of their dedication and service to PACADA, three retiring PACADA members were presented with a “Lifetime Membership” plaque. The plaque was presented individually to Midge Keller, Mary Ann Neel, and Judy Ohlgren during the retirement receptions organized by the respective school or department. In their retirement speeches, the retiring members expressed their appreciation at being recognized by PACADA in this manner.

Professional Development Committee

By Linda Campion, Chair

Our committee continues to gear up for the Fall Retreat. The topic, as a reminder, is Wellness and our committee is addressing the topic from the perspective of both student and advisor. We will send specific information to you via the PACADA listserv as we get closer to the date. The retreat is set for September 21st.

We will have the retreat at the Wright Forestry Center, Martell Center, which is located at 1011 North 725 West, West Lafayette. Judy Ware found the internet map so you can find your way easily. Please access: <http://www.agriculture.purdue.edu/fnr/jswright/directions.htm>

This is a great find for us, thank you Judy!

We have tried to hold our meetings here before, but have not been able to secure the reservation, so please make plans to attend so we can all share and learn ways to help our students and ourselves be healthy - and also so we can renew our friendships for the academic year.

Should you have any questions, please feel free to contact me at 4-6484 or llcampion@tech.purdue.edu. I will try to answer them for you.

Useful Advising Websites

NACADA: www.nacada.ksu.edu

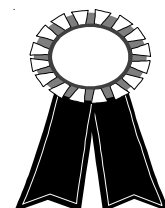
The Mentor (online journal): www.psu.edu/dus/mentor

IAAN: iaan.indiana.edu

PACADA: www.purdue.edu/advisors/pacada

Academic Advisors Resource Guide: www.purdue.edu/advisors

**Are there others you use frequently?
Send them to the editor for the next newsletter!**



Campus Affairs Committee

By Marsha Freeland, Chair

On behalf of the Campus Affairs Committee, I'd like to welcome everyone back for the new school year, and to invite you to expand your professional horizons by joining our group. We meet two to three times a semester to discuss issues of concern to advisors that are occurring on campus. If the group deems that an issue demands action on our part, we investigate and initiate proposals and solutions.

A topic of concern last spring was fall fraternity rushing. We became even more concerned when it was learned that sororities are also moving to a fall rush. But did we simply sit and wring our hands with worry? Of course not! Like every good university organization, we formed a sub-committee to look into it. This group met with Andy Robison, who works with the Greeks through the Dean of Students Office, and a very helpful dialogue resulted where advisors offered ideas on how we might help these students meet the scholarship challenge that can follow with fall pledging. The communication channels were opened and Andy did a great job of following up with a memo sent to advisors across campus earlier this month.

Freshmen living in Hilltop Apartments was also a concern that was discussed during our meetings last year. At that time there were nearly 300 freshmen living there, and even though the Residence Hall Staff members do programming for these students, the physical layout of these facilities could make it easier for a freshman to hide out. The committee would like to remind advisors to make a special effort to touch base with these students so that they don't slip through the cracks.

Additional items that were covered at our last regular meeting included graduation index adjustments, advisor evaluations, and campus accessibility issues. If you have thoughts about these topics or any others, please join us. The next meeting will be on August 12th, 3:30-5:00 in Young 447, or contact Marsha Freeland, mjfreeland@tech.purdue.edu, for next year's meeting schedule.

Supplemental Instruction Course Links for Fall

**BIO 203
PHYS 152
MGMT 201
CS 180
CHEM 115
MA 153
MA 154
MA 159
MA 161
MA 162
MA 261**

***Encourage your students to come early
in the semester and on a regular basis!***

***Note new location:**

**Lilly Hall of Life Sciences, Room 1-239
915 W. State Street
496-6410**

**Ethel Swartzendruber, SI Supervisor
swartzen@purdue.edu
www.sla.purdue.edu/asc
(schedule will be online August 23)**

Calendar of Events



September 16, 2004

Student Services Update Meeting
Krannert Auditorium
Time for presentations - 9:00 - 11:00 AM

September 21, 2004

Fall Retreat
John S. Wright Center Conference Facilities at
Martell Forest
1011 North 725 West, West Lafayette, IN 47906
8:30 a.m.-4:00 p.m.

October 6-9, 2004

28th NACADA National Conference
Cincinnati, OH

Spring 2005

NACADA Region 5 Conference
Toronto, Canada
Find further information on the the NACADA
Website

Science Counseling Update

By Beth Burnett, Director of Advising

Science Counseling and Purdue bid fond farewells this summer to Mary-Ann Neel and Midge Keller. Mary-Ann retired to Florida and reportedly has settled in to very nice digs near Disneyland. Midge is enjoying visiting with extended family from all over. Neither one seemed particularly upset to retire in the middle of Day On Campus.

Their lack of concern must have been due to their feeling that Science Counseling was in good hands with the addition of our two newest advisors, Carol Paczolt and Evonne Baldauff. Carol, a long-time PACADA member, came to us from CFS. Evonne, originally from Pennsylvania, is finishing her PhD in Inorganic/ Materials Chemistry this summer. Carol will be working with Computer Science and undecided Science students, while Evonne will focus on lower division Chemistry students. We are pleased to welcome both of them to the second floor of the Math Building!

New Diversity Coordinator in SLA Advising

By Associate Dean of Liberal Arts, David A. Santogrossi

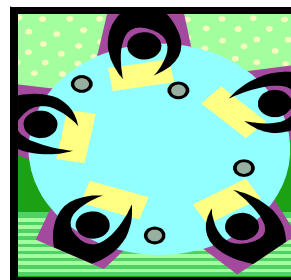
As part of our commitment to multicultural diversity, The School of Liberal Arts has recently hired a Diversity Coordinator in the student academic advising office. Ms. Lisa Woodie, originally from Chicago Heights IL, has most recently worked as an academic advisor/recruiter in the Hudson & Holland Scholars Program at Indiana University-Bloomington. Her other experiences include Diversity Programming chair and Assistant to the Director of the Office of Multicultural Programs at Valparaiso University. She has an undergraduate degree in sociology and a Master's in Higher Education & Student Affairs. Her longtime interest in multicultural service was inspired by the assistance that helped her and her Hispanic peers in their college days. Lisa will work primarily on student recruitment and retention, and her early plans are to develop and facilitate a peer-mentoring program and a student organization for Liberal Arts multicultural students.

SLA Advising Updates

By Ginger Borden, Assitant Editor

In the past few months we have said goodbye to several of our friends and colleagues in Liberal Arts who have taken on new responsibilities and challenges in a variety of settings.

Linda Haynes and Dr. Barbara Dixon have accepted teaching positions in the English Department. Pam Deutsch will be teaching, and performing administrative duties for the Communication Department. Cindy Keffer also a Communication advisor, has left in order to spend more time with family and friends. Judy Ohlgren has retired and Colleen Williams will now be advising for Political Science. Dr. Diane Guinan, HKLS advisor will be relocating to North Carolina. As we say goodbye, we also have the opportunity to welcome several new advisors to the Liberal Arts advising staff. Lupita Acosta-Nava and Sheila Fothergill will both be advising in Communications and Lisa Woodie will be our new Coordinator of Diversity Initiatives as well as half time English advising.



In Memory

By Judy Ware

Peggy Sullivan, died on Thursday, July 22, 2004, in the home of her sister in Dunlap, Illinois. Born September 24, 1943, in Peoria, Illinois, she graduated from Western Illinois University with a bachelor's degree in home economics. She received her master's degree in counseling at Kansas State University. Peggy was the assistant dean of students at Purdue University for more than 30 years. As the Director of the Span Plan program, Peggy designed and taught an eight-week orientation course and a life career planning class for adults. She was an active member of PACADA and was awarded the Outstanding Advisor Award in 1997. Throughout her long battle with cancer, she continued to be an inspiration to her family and friends.

Hello from Saint Mary's College

Greetings from Saint Mary's College and PACADA's *only* affiliate member. I'm alive and well here in South Bend....actually Saint Mary's College is officially located in Notre Dame, Indiana but I can't quite make my mouth say those Notre Dame words too often. I'm currently an Assistant Professor in the Department of Business Administration and Economics teaching a couple of business classes and serving as the department's Director of Student Programs. For those of you who aren't familiar with Saint Mary's College, it is a private, catholic, liberal arts college for women with a total enrollment of 1,500 students. As you might imagine, being a Purdue graduate and employee for 18 years, Saint Mary's College is quite a different world for me. For some reason people continue to ask me what the differences are between Saint Mary's students and Purdue students. My usual answer is "let me count the ways!!" After two years I'm still adjusting to the culture and environment and I suspect they are still trying to adjust to me.

Freshman students here have the option to be academically advised by the professional staff in the office of "first year studies" or to be advised by faculty in the departments. After the freshman year, all students are advised by faculty in the students' intended major. Many faculty here have advising loads of less than ten students, a heavy load is between 10 and 25 students. I advise all freshman and sophomore intended business majors and my load is 100 students. Advising 100 students doesn't seem like that many to me but it's unheard of on campus and I am quickly becoming a folk legend. I actually enjoy the larger numbers. When I relate the stories of advising loads on Purdue's campus, no one can imagine advising that many students. When I tell the story of teaching MGMT 100 in WTHR 200 with the room filled to capacity, the eyes of faculty, students and staff just glaze over!

As an affiliate member I do get the newsletter and read with interest what you're all doing. I'd be happy to correspond with anyone by email and I'd be happy to meet with any of my Purdue colleagues when you're in the area. I can arrange tours of Saint Mary's campus if you'd like and I can point to where the 800 pound gorilla lives across the street. I think you know who I'm referring to since my mouth can't quite say those words again. Ah yes,...it's quite a different world, "let me count the ways!!" Please keep in touch,

Michael D. Sanders

Director of the Promoting Indiana Opportunities Grant

Assistant Professor and Director of Student Programs

Department of Business Administration and Economics

Saint Mary's College

12 Madeleva Hall

Notre Dame, Indiana 46556

574-284-4499

msanders@saintmarys.edu

WELCOME BACK!



Order your PACADA logo shirt at the upcoming fall retreat September 21th!

PACADA

Purdue Academic Advising Association

Advising Matters

the newsletter of PACADA

Elizabeth Diaz, Editor

Ginger Borden, Assistant Editor

